



# Sisal

RESIDENTIAL



# SERA



10



50



72



73



75



82



85



325



376

## TECHNICAL SPECIFICATION

Manufacturing Process	Tufted	
Gauge	5/64" Cut pile	
Pile Material	100% Polyester	
Pile Weight	2.065 g/m <sup>2</sup>	
Total Weight	3.100 g/m <sup>2</sup>	
Pile Height	11,0 mm	
Total Height	14,0 mm	
Tuft Density	312.480 m <sup>2</sup>	
Fire Behavior	Cfl-s1	EN13501-1
Backing	Double Back	
Width	400 cm	
Colour Fastness to Light	≥5	105-B02
Colour Fastness to Water	≥4	105-E01
Rubbing Fastness	≥4	105-X12



# SERENO



40



50



69



74



76



77



78

## TECHNICAL SPECIFICATION

Manufacturing Process	Tufted	
Gauge	1/10" Cut pile	
Pile Material	100% Polyester	
Pile Weight	1.500 g/m <sup>2</sup>	
Total Weight	2.500 g/m <sup>2</sup>	
Pile Height	15,0 mm	
Total Height	18,0 mm	
Tuft Density	142.200 m <sup>2</sup>	
Fire Behavior	Cfl-s1	EN 13501-1
Backing	Double Back	
Width	400 cm	
Colour Fastness to Light	≥5	105-B02
Colour Fastness to Water	≥4	105-E01
Rubbing Fastness	≥4	105-X12



# GIMA



20



55



70



72



76



78



174

## TECHNICAL SPECIFICATION

Manufacturing Process	Tufted	
Gauge	5/32" Cut pile	
Pile Material	100% Recycled Polyester	
Pile Weight	2.250 g/m <sup>2</sup>	
Total Weight	3.200 g/m <sup>2</sup>	
Pile Height	18,0 mm	
Total Height	21,0 mm	
Tuft Density	125.000 m <sup>2</sup>	
Fire Behavior	Cfl-s1	EN 13501-1
Backing	Double Back	
Width	400 cm	
Colour Fastness to Light	≥5	105-B02
Colour Fastness to Water	≥4	105-E01
Rubbing Fastness	≥4	105-X12



# URIO



69



71



74



78



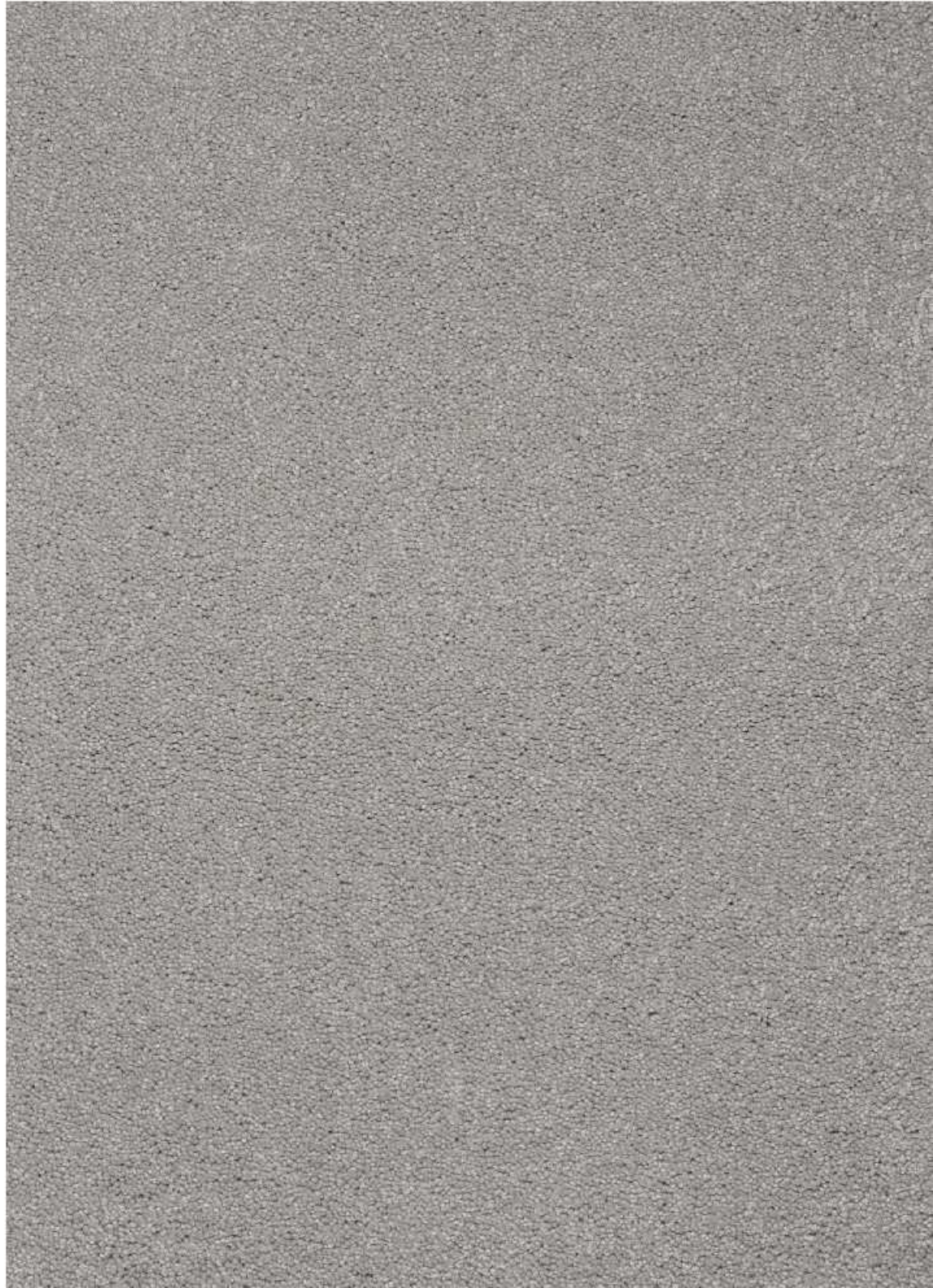
95



175

## TECHNICAL SPECIFICATION

Manufacturing Process	Tufted	
Gauge	1/10" Cut pile	
Pile Material	100% Polyester	
Pile Weight	2.280 g/m <sup>2</sup>	
Total Weight	3.280 g/m <sup>2</sup>	
Pile Height	16,0 mm	
Total Height	19,0 mm	
Tuft Density	187.625 m <sup>2</sup>	
Fire Behavior	CFI-s1	EN 13501-1
Backing	Double Back	
Width	400 cm	
Colour Fastness to Light	≥5	105-B02
Colour Fastness to Water	≥4	105-E01
Rubbing Fastness	≥4	105-X12



# UNIQUE



05



09



31



35



37



39



41



90



91



94



95



98

## TECHNICAL SPECIFICATION

Manufacturing Process	Tufted
Gauge	1/10" Cut pile
Pile Material	100% Polypropylene
Pile Weight	2.500 g/m <sup>2</sup>
Total Weight	3.240 g/m <sup>2</sup>
Pile Height	17,5 mm
Total Height	20,0 mm
Tuft Density	189.600 m <sup>2</sup>
Fire Behavior	Fl
Backing	Fusionbac
Width	400/500 cm
Thermal Resistance	0,240 m <sup>2</sup> C
Impact Noise Rating	34 dB
Dye Method	100% Solution Dyed



# REFLEXA



50



72



75



76



82



91



92



93



174



176

## TECHNICAL SPECIFICATION

Manufacturing Process	Tufted
Gauge	1/8" Cut pile
Pile Material	100% Polyester
Pile Weight	2.100 g/m <sup>2</sup>
Total Weight	3.050 g/m <sup>2</sup>
Pile Height	18,0 mm
Total Height	20,0 mm
Tuft Density	124.425 m <sup>2</sup>
Fire Behavior	Cl1 -s1
Backing	Comfort Back
Width	400 cm



# LOFT



42



60



78

## TECHNICAL SPECIFICATION

Manufacturing Process	Tufted
Gauge	3/8" Cut pile
Pile Material	100% Polyester Soft
Pile Weight	1.800 g/m <sup>2</sup>
Total Weight	3.085 g/m <sup>2</sup>
Pile Height	35,0 mm
Total Height	37,0 mm
Tuft Density	21.000 /m <sup>2</sup>
Impact Noise Rating	34 dB
Fire Behavior	Efl-s1
Backing	Felt Back
Width	400 cm
Dye Method	Solution Dyed
Colour Fastness to Light	≥5
Colour Fastness to Water	≥4-5
Rubbing Fastness	≥4-5
Thermal Resistance	0.28 m <sup>2</sup> K/W



# PLUSH



60



65



70



74



77

## TECHNICAL SPECIFICATION

Manufacturing Process	Tufted
Gauge	3/8" Cut pile
Pile Material	100% Polypropylene Soft
Pile Weight	3.000 g/m <sup>2</sup>
Total Weight	3.925 g/m <sup>2</sup>
Pile Height	40.0 mm
Total Height	42.0 mm
Tuft Density	40.950 /m <sup>2</sup>
Impact Noise Rating	34 dB
Fire Behavior	Efl-s1
Backing	Felt Back
Width	400 cm
Dye Method	Solution Dyed
Colour Fastness to Light	≥5
Colour Fastness to Water	≥4-5
Rubbing Fastness	≥4-5
Thermal Resistance	0.29 m <sup>2</sup> K/W



## MASTERPIECE



140



169



170



171



172



173



175



176



178



183



191



192

### TECHNICAL SPECIFICATION

Manufacturing Process	Tufted
Gauge	1/10" Cut pile
Pile Material	100% Polyester
Pile Weight	2.110 g/m <sup>2</sup>
Total Weight	2.850 g/m <sup>2</sup>
Pile Height	16,0 mm
Total Height	19,0 mm
Tuft Density	233.000 m <sup>2</sup>
Fire Behavior	Cfl-s1
Backing	Comfort Back
Width	400 cm
Colour Fastness to Light	≥5
Colour Fastness to Water	≥4
Wearability	≥4



# GOLDEN GATE



27010



27152



27477



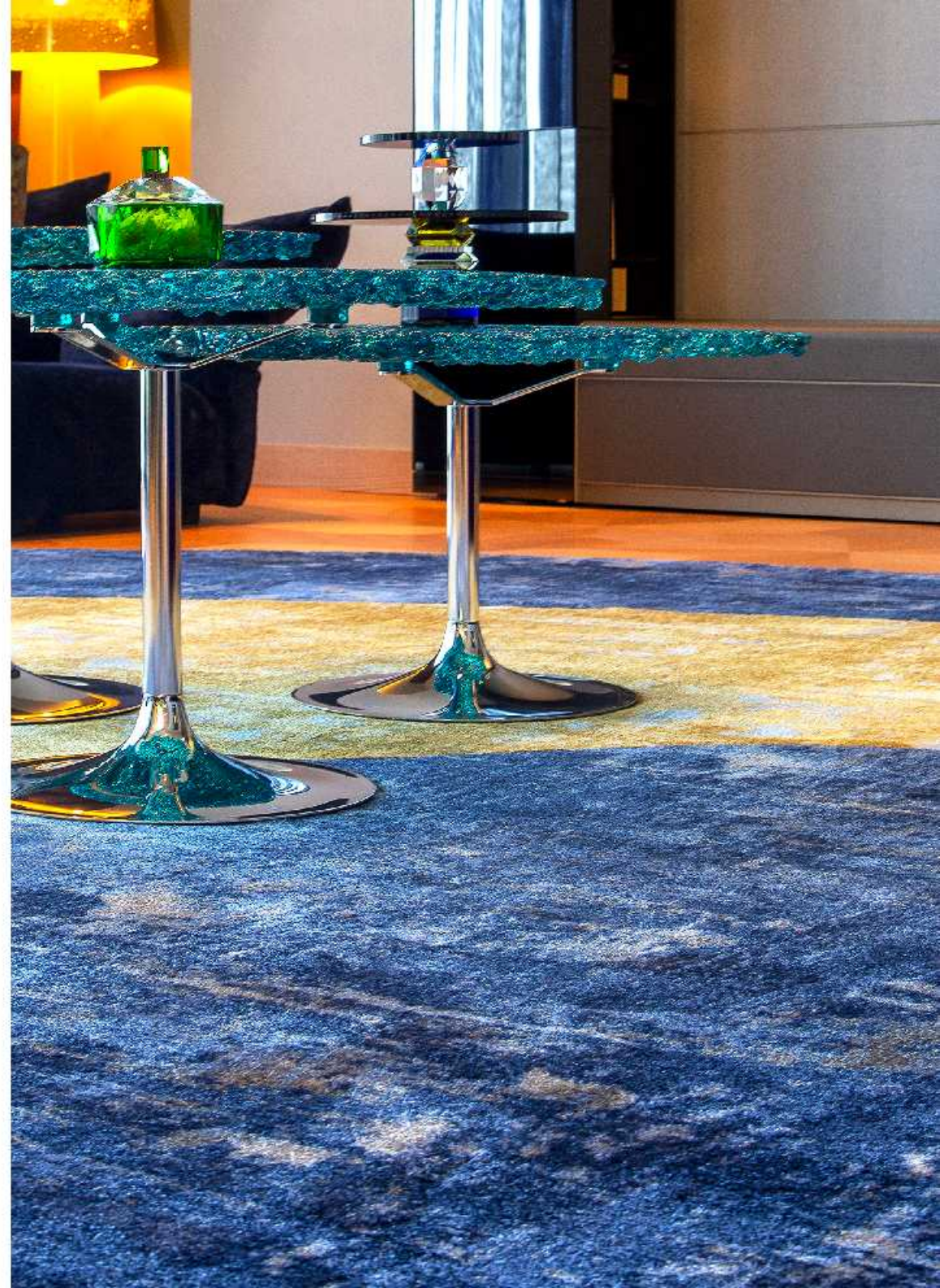
27890



27996

## TECHNICAL SPECIFICATION

Manufacturing Process	Tufted	
Gauge	1/10" Cut pile	
Pile Material	100% Polyamide 2-ply	
Pile Weight	1.300 g/m <sup>2</sup>	
Total Weight	1.905 g/m <sup>2</sup>	
Pile Height	6,5 mm	
Total Height	10,0 mm	
Tuft Density	189.000 m <sup>2</sup>	
Fire Behavior	Bfl -s1	
Backing	Double Back	
Width	400 cm	
Colour Fastness to Light	≥5	ISO 105-B2
Colour Fastness to Water	≥4-5	ISO 105-E01
Rubbing Fastness	≥4-5	ISO 105-X12
Thermal Resistance	0,1m <sup>2</sup> K/W	
Impact Noise Rating	25 dB	



# CASTANA



30



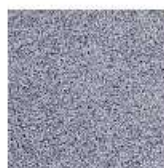
33



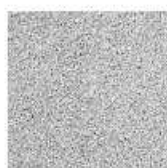
47



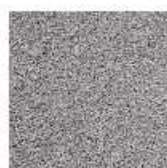
63



79



93



96

## TECHNICAL SPECIFICATION

Manufacturing Process	Tufted
Gauge	5/32" Cut pile Saxony
Pile Material	100% Polyamide 6
Pile Weight	2.500 g/m <sup>2</sup>
Total Weight	3.200 g/m <sup>2</sup>
Pile Height	11.0 mm
Total Height	15.0 mm
Tuft Density	124.000 m <sup>2</sup>
Fire Behavior	Cfl -s1
Backing	Double Back
Width	400 cm
Colour Fastness to Light	≥5 -6
Colour Fastness to Water	≥4-5
Thermal Resistance	0.14 m <sup>2</sup> K/W
Impact Noise Rating	32 dB



# SYDNEY



101



105



108



112



204



236



301



302



305



320



325



425

## TECHNICAL SPECIFICATION

Manufacturing Process	Tufted
Gauge	1/10" Cut pile
Pile Material	100% Polyamide 6.6
Pile Weight	1.845 g/m <sup>2</sup>
Total Weight	2.850 g/m <sup>2</sup>
Pile Height	12.0 mm
Total Height	14.0 mm
Tuft Density	264.000 m <sup>2</sup>
Fire Behavior	Bfl -s1
Backing	Comfort Back
Primary Backing	Woven
Width	400 /500 cm



## VERSAILLES



102



132



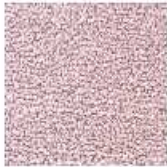
154



163



189



825



829

### TECHNICAL SPECIFICATION

Manufacturing Process	Tufted
Gauge	1/10" Soft Cut pile
Pile Material	100% Polyamide 6
Pile Weight	8.825 g/m <sup>2</sup>
Total Weight	3.600 g/m <sup>2</sup>
Pile Height	14,0 mm
Total Height	16,0 mm
Tuft Density	305.000 m <sup>2</sup>
Fire Behavior	CFI -s1
Backing	Double Back
Width	400 cm
Thermal Resistance	0,18 m <sup>2</sup> K/W
Impact Noise Rating	25 dB

